

**Operating Instructions**  
**for**  
**Manifold Valves for Multiple Installation**  
**for Lubricating Oil Circuits**

**Model: BVB**



## 1. Contents

---

1. Contents.....	2
2. Note .....	3
3. Instrument Inspection.....	3
4. Regulation Use.....	3
5. Operating Principle.....	4
6. Mechanical Connection.....	4
7. Technical Information.....	5
8. Order Codes .....	5
9. Dimensions .....	6

### **Manufactured and sold by:**

KOBOLD Instruments, Inc.  
1801 Parkway View Drive  
Pittsburgh, PA 15205  
Tel.: 1.800.998.1020  
Fax: 1.412.788.4890  
info@koboldusa.com  
www.koboldusa.com

## **2. Note**

---

Please read these operating instructions before unpacking and putting the unit into operation. Follow the instructions precisely as described herein.

The devices are only to be used, maintained, and serviced by persons familiar with these operating instructions and in accordance with local regulations applying to Health & Safety and prevention of accidents.

When used in machines, the measuring unit should be used only when the machines fulfill the EC-machine guidelines.

### **as per PED 2014/68/EU**

In acc. with Article 4 Paragraph (3), "Sound Engineering Practice", of the PED 2014/68/EU no CE mark.

Diagram 8, Pipe, Group 1 dangerous fluids

## **3. Instrument Inspection**

---

Instruments are inspected before shipping and sent out in perfect condition.

Should damage to a device be visible, we recommend a thorough inspection of the delivery packaging. In case of damage, please inform your parcel service / forwarding agent immediately, since they are responsible for damages during transit.

### **Scope of delivery:**

The standard delivery includes:

- Manifold Valves for Lubricating Oil Circuits: Model: BVB
- Operating Instructions

## **4. Regulation Use**

---

Any use of the Manifold Valves , model: BVB, which exceeds the manufacturer's specifications, may invalidate its warranty. Therefore, any resulting damage is not the responsibility of the manufacturer. The user assumes all risk for such usage.

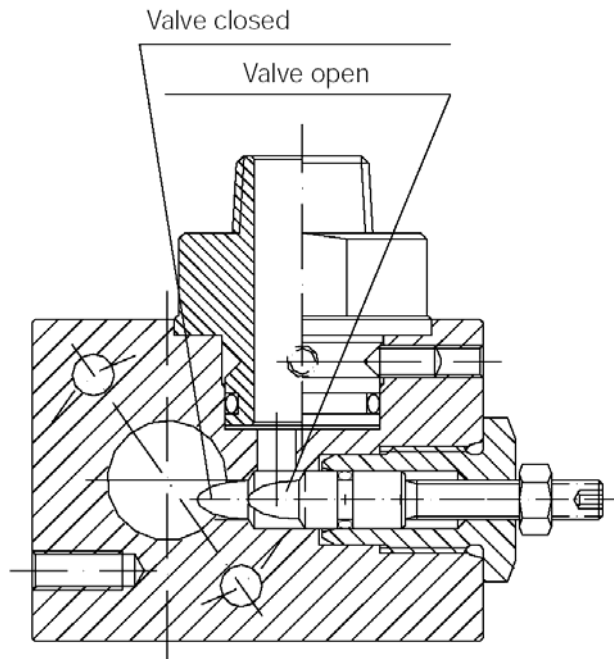
## 5. Operating Principle

---

For centralised flow measurement and switching, for example, with lubricating oil circuits we recommend the KOBOLD manifold valves for multiple device installation.

A group of manifold from one to eight pcs. can be assembled with the flowmeters. The max. flow of each group does not exceed 6.3 g/min.

### Design



## 6. Mechanical Connection

---

### Before installation

- Remove all packing materials and transport retainers and ensure that no such materials remain in the device.
- Make sure that the maximum operating pressure and temperature of the device are not exceeded. (see section 7 Technical Information)
- Mount the manifold in the pipe.
- Avoid water hammer in the measuring tube e.g. caused through a very quick shut off the flow.
- If possible, check directly after mechanical installation that the connection thread to pipe is fully sealed.
- Avoid the mounting of the flow switches in magnetic fields.

## 7. Technical Information

---

Housing:	Aluminium, anodized
Process connection:	1/2" NPT (BVB) Please specify whether for model VKG or VKM
Max. flow rate:	6.3 g/min. per group
Seal:	NBR
Max. temperature:	212 °F
Max. pressure:	930 PSIG VKM mount, 175 PSIG VKG mount (Please compare with the max. pressure allowed for flowmeter/-switch)
kv-value:	7.25 psi at 2.5 g/min water 14.5 psi at 3.7 g/min. water 29 psi at 5.28 g/min. water

## 8. Order Codes

---

Order Details (Example: BVB-4101)

Order number	Version
<b>BVB-4101</b>	1 manifold valve
<b>BVB-4102</b>	2- fold manifold valve
<b>BVB-4103</b>	3- fold manifold valve
<b>BVB-4104</b>	4- fold manifold valve
<b>BVB-4105</b>	5- fold manifold valve
<b>BVB-4106</b>	6- fold manifold valve
<b>BVB-4107</b>	7- fold manifold valve
<b>BVB-4108</b>	8- fold manifold valve

Please order the necessary flow meters separately and mention if the units must be assembled together.

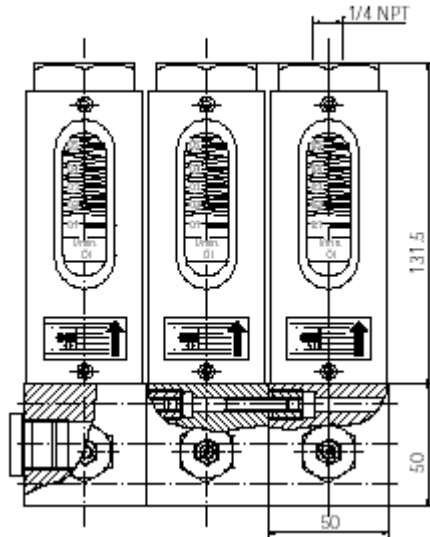
Example:

Item 1	BVB – 4102	x 1 piece
Item 2	VKG – 6105	x 2 pieces

## 9. Dimensions

---

Three-fold block with flow meter VKG...



3-fold block with flow meter VKM...

