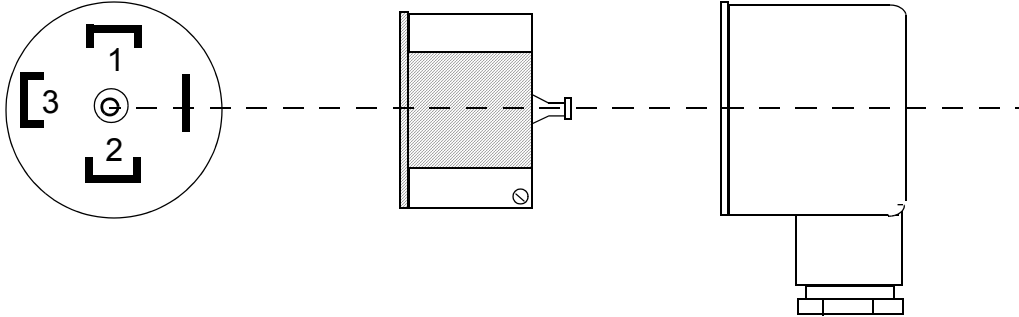


SEN Series Pressure Sensor Wiring

Plug Assembly



Pin Assignment for 4-20 mA Output

Pin 1 = +15 to 32 VDC
Pin 2 = 4-20 mA out

Pin Assignment for 0-10 VDC Output

Pin 1 = +15 to 32 VDC
Pin 2 = Common
Pin 3 = Signal Output

Specifications

| | | | |
|----------------------------|---|--|---|
| Measuring Ranges: | 0-30" Hg vacuum to 0-8700 PSIG; compound ranges available on request | Overpressure Ratings 30" Hg to 500 PSIG: >500 PSIG: | 2x Max. range 1.2x Max. range |
| Accuracy: | ±0.5% or ±1.0% of full scale depending on model | Process Wetted Parts Sensing Element: Connection: O-Ring: | Ceramic 304 Stainless steel Buna-N; others available on request |
| Compensated Temp. Range: | 12 to 185°F | Housing Material: | 303 Stainless steel |
| Temperature Drift Zero: | < ±0.011%/°F for accuracy=0.5% < ±0.022%/°F for accuracy=1.0% | Power Supply: | 16-32 VDC |
| Span: | < ±0.006%/°F for accuracy=0.5% < ±0.011%/°F for accuracy=1.0% | Output: | 4-20 mA, 0-10 VDC |
| Stability (annual) | < ±0.2% of full scale | Max. Loop Load: | (Vsupply-15)/0.02 (for 4-20 mA) |
| Sensor Element: | Piezoresistive ceramic | Response Time: | < 1 ms from 10% to 90% of scale |
| Operating Temp. Range | | Electrical Connection: | Hirschman Plug (DIN 43650 A) with cable gland |
| Process Medium: | -40 to 212°F | Electrical Protection: | IP 65 |
| Ambient: | -40 to 150°F | | |
| Storage: | -40 to 185°F | | |



KOBOLD Instruments Inc
1801 Parkway View Drive
Pittsburgh, PA 15205

Ph: 412-788-2830
Fax: 412-788-4890
www.koboldusa.com

Manual-SEN_86-87
Rev 3/14/17

Model Code Identification

SEN = Ceramic Cell Pressure Transmitter

