



PAD/DRM Application Guide

Rev 10/24/18

* This form is only required if you are ordering the PAD with a DRM diaphragm seal.

General Information

Contact Name: _____

Company Name: _____

Phone: _____

Quote Number: _____

Email: _____

Date: _____

Number of Pieces Required: _____

This has not been quoted yet and pricing is required.

Model Information

1. PAD Model Number: _____

2. PAD Calibration Range: _____

3. DRM Model Number: _____

4. DRM Size Code: _____

5. DRM Material Type (Wetted Part): _____

6. DRM Connection Material (Wetted Part): _____

Media Information

1. Media: _____

2. Media Operating Density: _____

3. Media Operating Viscosity: _____

Temperature

1. Minimum Media Temp: _____ Media Operating Temp: _____ Maximum Media Temp: _____

2. Minimum Ambient Temp: _____ Ambient Operating Temp: _____ Maximum Ambient Temp: _____

3. Rinsing Temp. of Diaphragm Seal: _____ Rinsing Temp. of Capillary: _____

Pressure

1. Static Operating Pressure: _____

2. Dynamic Minimum Operating Pressure: _____

3. Dynamic Maximum Operating Pressure: _____

4. Maximum Negative Pressure: _____

5. Maximum Over-Pressure: _____

6. Display Damping: Yes No

If Yes: Light Medium Strong

Arrangement with Connection Rod

1. Connection Rod Length (ΔL = minimum 150 mm, maximum 500 mm) at High Pressure Port 'H': _____
(See Figure 1 on Page 3 for More Details)

Arrangement with Capillary

- 1. Diaphragm Seal Needed on High Pressure Port: No Yes, DRM Model: _____
- 2. Diaphragm Seal Needed on Low Pressure Port: No Yes, DRM Model: _____
- 3. Orientation of Diaphragm Seals at High Pressure Port (see Page 3, Figure 2)
 Sealing Surface Facing DOWN Sealing Surface Facing UP
 Sealing Surface Facing LEFT Sealing Surface Facing RIGHT
- 4. Orientation of Diaphragm Seals at Low Pressure Port (see Page 3, Figure 2)
 Sealing Surface Facing DOWN Sealing Surface Facing UP
 Sealing Surface Facing LEFT Sealing Surface Facing RIGHT
- 5. Length of Capillary at: High Pressure Port: _____ Low Pressure Port: _____
- 6. Protection Hose is Required: No Yes

Height Adjustment

- 1. Factory Calibration for Height Adjustment Required: No Yes
- If Yes, Choose from the Following Options:
- PAD Higher than DRM at High Pressure Port (Fig. 2 or 3), Specify $+\Delta h$ (1): _____
 - PAD Lower than DRM at High Pressure Port (Fig. 2 or 3), Specify $-\Delta h$ (1): _____
 - PAD Higher* than DRM at Low Pressure Port (Fig. 2), Specify $+\Delta h$ (2): _____ (*Not for PAD-G)
 - PAD Lower* than DRM at Low Pressure Port (Fig. 2), Specify $-\Delta h$ (2): _____ (*Not for PAD-G)

Extended Diaphragm Seal Option (See Figure 1 or Figure 3 for R_L Dimension)

- 1. Extended Diaphragm Seal Needed at High Pressure Port: No Yes, R_L Length: _____
- 2. Extended Diaphragm Seal Needed at Low Pressure Port: No Yes, R_L Length: _____

Fill Liquid

- Glycerine Oil, Silicone Free, Food Grade, Operating Temperature 14...176 °F
- Parrafin Oil, Silicone Free, Food Grade, Operating Temperature 14...248 °F
- Silicone Oil for Operating Temperature -40...392 °F
- Silicone Oil for Operating Temperature -4...662 °F
- Silicone Oil for Operating Temperature -4...752 °F

Example of PAD Direct Assembled with an Extended Diaphragm Seal (not available as ATEX-Version)

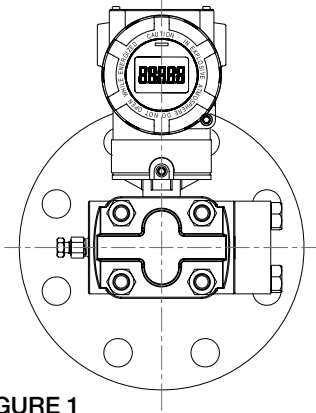
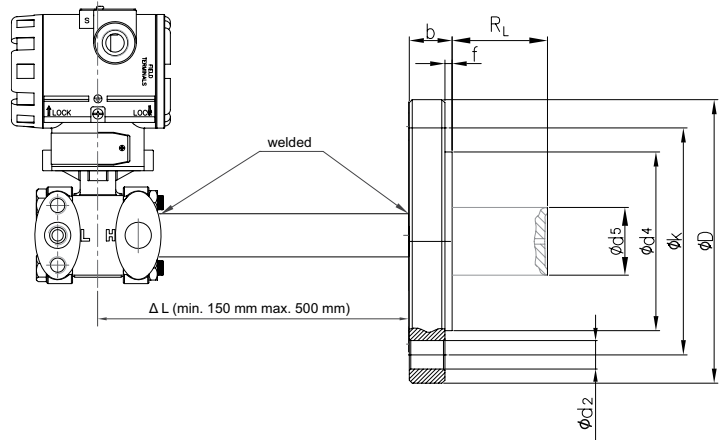


FIGURE 1



Example of PAD Assembled with Remote Diaphragm Seal and Capillaries

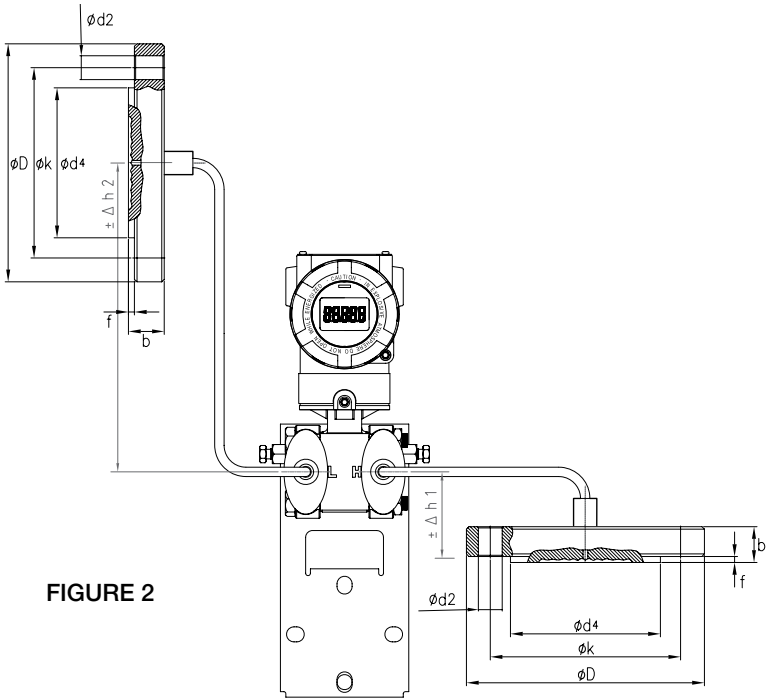


FIGURE 2

Example of PAD-G Assembled with Extended Diaphragm Seal and Capillary

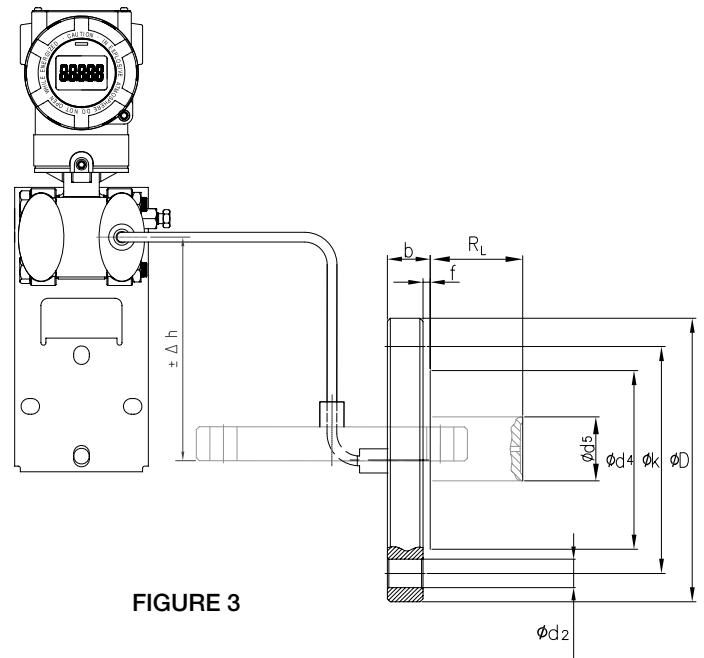


FIGURE 3

Special Requirements or Additional Considerations:

* For Dimensional Details, see DRM Datasheet